



Mulching Heads



IMH Series



A TOOL FOR EVERY JOB



Application areas

		IMH	SG	
 <p>Land Clearing</p>	Land clearing	• Right of way clearance and maintenance	<input type="radio"/>	
		• Power transmission/distribution line and substation clearance	<input type="radio"/>	
		• Railway maintenance	<input type="radio"/>	
		• Residential and farm clearing	<input type="radio"/>	
		• Highway maintenance	<input type="radio"/>	
		• Pipeline clearance	<input type="radio"/>	
		• Ski resorts and other speciality field maintenance	<input type="radio"/>	
		• Roadside maintenance	<input type="radio"/>	
 <p>Agriculture and Forestry</p>	Gardening & landscaping	• Fencing		
		• Ground excavation		
		• Rock breaking		
		• Pit planting		
	• Stump splitting			
	• Golf course maintenance	<input type="radio"/>		
	• Root and stump grinding		<input type="radio"/>	
	• Hedgerow clearance and rejuvenation	<input type="radio"/>		
	• Grinding of logging residues	<input type="radio"/>		
	Forestry	• Timber log handling		
• Maintenance of green area, small trees and brush		<input type="radio"/>		
• Creation and upkeep of woodland corridors and firebreaks		<input type="radio"/>		
• Tree clearing		<input type="radio"/>		
• Vegetation clearing		<input type="radio"/>		
• Branch clearing		<input type="radio"/>		

IMH

Mulching Heads

Indeco's new IMH series of hydraulically driven, boom-mounted mulching heads are specifically designed for a broad range of land clearing, site preparation, invasive vegetation species management, storm damage removal and clean-up applications. Tailored to fit a wide range of carriers from 5 to 50 tons, the IMH series is available in a number of direct-drive and belt-driven high-performance models and features HARDOX® components and bodies for optimal service life and lasting reliability.

Achieving greater productivity and cost-efficiency than a dedicated crew of workers with chainsaws and chippers, IMH Mulching Heads fully leverage your existing equipment investments by utilizing the excavator, back-hoe or skid-steer auxiliary hydraulics to turn your existing machine into a powerful land-clearing tool.

With a low initial cost, single man/machine operation for reduced processing costs and ease of use, the IMH series requires no additional specialized machinery and can be used on multiple machines to deliver a superior return on investment for your mulching applications.

In addition to superior productivity gains, mulching with the Indeco IMH series is also a more environmentally friendly process than conventional burning by putting back unwanted vegetation into the ecosystem as mulch.

This protects newly cleared areas from wind and rain erosion while providing the soil with beneficial microorganisms.



IMH

for compact excavators



Technical Data	IMH 5	IMH 6
Type of carrier	1 3 4	1 3 4
Cutting width	765 mm	765 mm
GPM range	45 ÷ 70 l/min	60 ÷ 95 l/min
Number of teeth	14	14
Drum diameter	205 mm	205 mm
Motor specification	Gears	Gears
Transmission	Direct	Direct
Working pressure	205 ÷ 280 bars	205 ÷ 280 bars
Attachment operating weight*	540 Kg	555 Kg
Excavator weight	5 ÷ 10 tons	6 ÷ 12 tons

*The attachment operating weight includes mounting bracket compatible with Indeco construction standards. Any differences in weight may be due to a different mounting bracket configuration.

Technical Data	IMH 8	IMH 10
Type of carrier	1 3 4	1 3 4
Cutting width	765 mm	865 mm
GPM range	65 ÷ 105 l/min	65 ÷ 105 l/min
Number of teeth	14	45
Drum diameter	205 mm	205 mm
Motor specification	Piston	Piston
Transmission	Direct	Direct
Working pressure	205 ÷ 280 bars	240 ÷ 350 bars
Attachment operating weight*	600 Kg	736 Kg
Excavator weight	8 ÷ 15 tons	10 ÷ 18 tons

N.B. All illustrations and numerical data in this catalog are purely indicative and subject to change at our discretion and without notice. We therefore reserve the right to modify them with a view to improving and continuously developing our product.

Carrier key



Compatibility

Suggested uses on machines with an overall weight (in tons):



IMH for excavators



Technical Data	IMH 15	IMH 19
Type of carrier	4 5	5
Cutting width	1020 mm	1020 mm
GPM range	90 ÷ 155 l/min	135 ÷ 190 l/min
Number of teeth	42	40
Drum diameter	305 mm	305 mm
Motor specification	Piston	Piston
Transmission	Belt	Belt
Working pressure	240 ÷ 350 bars	240 ÷ 350 bars
Attachment operating weight*	1500 Kg	1550 Kg
Excavator weight	15 ÷ 25 tons	19 ÷ 30 tons

*The attachment operating weight includes mounting bracket compatible with Indeco construction standards. Any differences in weight may be due to a different mounting bracket configuration.

Technical Data	IMH 28
Type of carrier	5
Cutting width	1270 mm
GPM range	185 ÷ 265 l/min
Number of teeth	48
Drum diameter	460 mm
Motor specification	Piston
Transmission	Belt
Working pressure	240 ÷ 350 bars
Attachment operating weight*	2095 Kg
Excavator weight	28 ÷ 45 tons

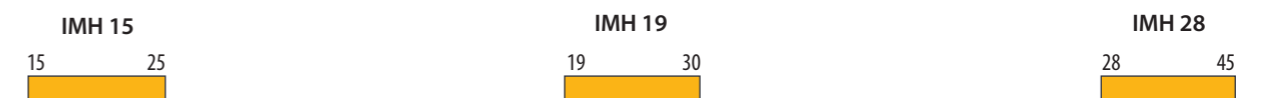
N.B. All illustrations and numerical data in this catalog are purely indicative and subject to change at our discretion and without notice. We therefore reserve the right to modify them with a view to improving and continuously developing our product.

Carrier key



Compatibility

Suggested uses on machines with an overall weight (in tons):



IMH for Skid Steers



Technical Data	IMH 3.5 SS
Type of carrier	2
Cutting width	1450 mm
GPM range	90 ÷ 155 l/min
Number of teeth	54
Drum diameter	205 mm
Motor specification	Piston
Transmission	Belt
Working pressure	240 ÷ 350 bars
Attachment operating weight*	1150 Kg
Excavator weight	3,5 ÷ 6 tons

*The attachment operating weight includes mounting bracket compatible with Indeco construction standards. Any differences in weight may be due to a different mounting bracket configuration.

All illustrations and numerical data in this catalog are purely indicative and subject to change at our discretion and without notice. We therefore reserve the right to modify them with a view to improving and continuously developing our product.

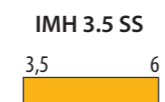


Carrier key



Compatibility

Suggested uses on machines with an overall weight (in tons):



IMH SG

Stump Grinders

When the going gets tough, it's time for the tough to take over.

IMH SG Stump Grinders are the ideal tools for clearing wooded areas after the taller trees have been cut.

After felling a tree, you may need to remove the tree stump from the ground for aesthetic or safety reasons, especially to counteract soil erosion.

Using the stump grinder reduces both removal and disposal costs. Available in two different models for carriers from 16 to 45 tons, they are easy to use and ensure maximum grinding efficiency.



Technical Data	IMH SG16	IMH SG20
Type of carrier	4 5	4 5
GPM range	90 ÷ 155 l/min	150 ÷ 230 l/min
Number of teeth	40	12
Motor specification	Piston	Piston
Transmissions	Belt	Belt
Working pressure	240 ÷ 350 bars	205 ÷ 350 bars
Attachment operating weight*	845 Kg	845 Kg
Excavator weight	16 ÷ 25 tons	20 ÷ 45 tons

*The attachment operating weight includes mounting bracket compatible with Indeco construction standards. Any differences in weight may be due to a different mounting bracket configuration.

N.B. All illustrations and numerical data in this catalog are purely indicative and subject to change at our discretion and without notice. We therefore reserve the right to modify them with a view to improving and continuously developing our product.

Carrier key



Compact excavator



Miniloader



Backhoe loader



Wheeled excavator



Tracked excavator

Compatibility

Suggested uses on machines with an overall weight (in tons):



Applications

Land clearing

IMH Mulching Heads are the perfect tools for clearing, cleaning up and periodically maintaining areas subject to becoming overgrown by vegetation. These can include pipelines, railway lines, ski slopes, electricity pylons and highways, as well as residential and commercial green areas.

Powerful and easy to handle, they make it possible to take action quickly and efficiently, ensuring optimum results with minimum effort.

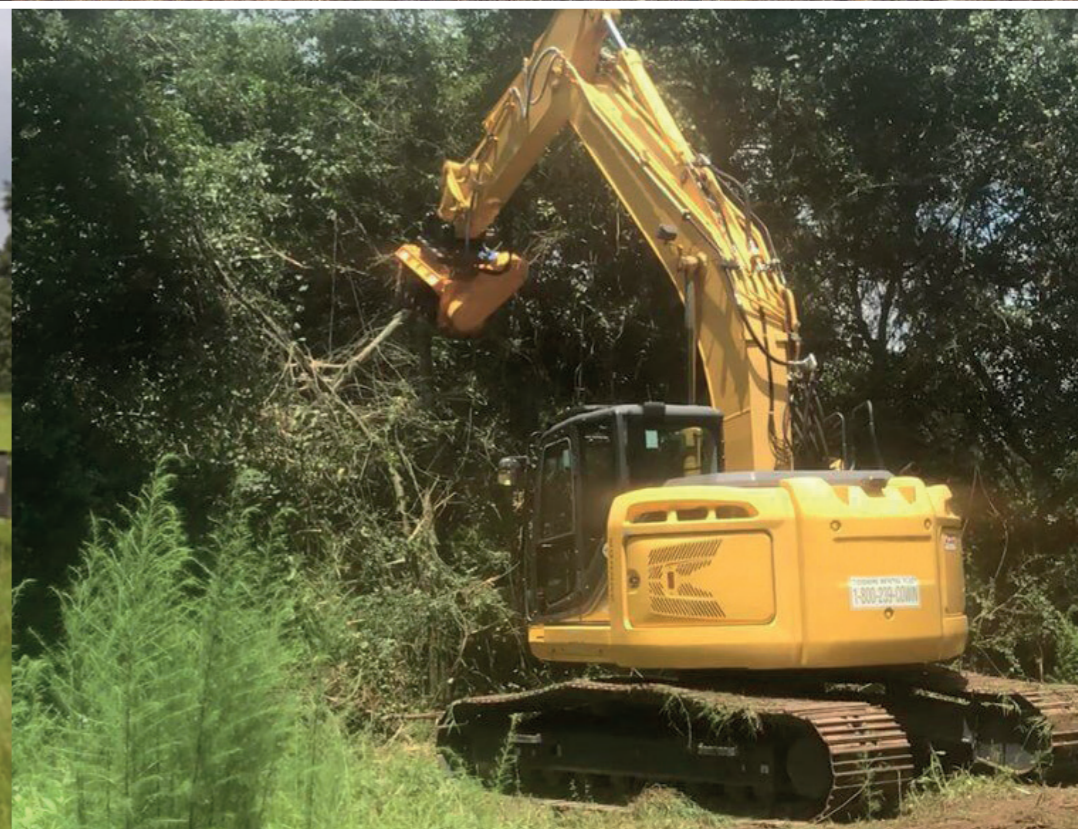
Forestry

Enjoying nature means first of all making it accessible, shaping it to our needs, making sure that it can develop properly.

IMH Mulching Heads are useful tools for jobs involving green area maintenance, undergrowth clearance, firebreak creation and upkeep, as well as tree, brush, vegetation and branch clearing.

Gardening & Landscaping

IMH Mulching Heads and SG Stump Grinders are ideal tools in special applications involving reshaping the landscape such as golf course creation and upkeep, hedgerow rejuvenation, as well as stump, root and logging residue removal.



The full range of other Indeco products

Products	Weight	Products	Weight	Products	Weight
IFP 8 X	750 Kg	IMP*	45 4500 Kg	ISS***	5/7 570 Kg
IFP 13 X	1300 Kg	IHC	50 200 Kg	ISS***	10/20 2400 Kg
IFP 19 X	1800 Kg	IHC	70 445 Kg	ISS***	20/30 3650 Kg
IFP 28 X	2800 Kg	IHC	75 485 Kg	ISS***	25/40 4800 Kg
IFP 35 X	3450 Kg	IHC	150 970 Kg	ISS***	30/50 6100 Kg
IFP 45 X	4550 Kg	IHC	250 1280 Kg	ISS***	35/60 7600 Kg
IRP 5 X	570 Kg	IHC R	50 425 Kg	ISS***	45/90 10400 Kg
IRP 11 X	1150 Kg	IHC R	70 630 Kg	IMH	5 540 Kg
IRP 18 X	1700 Kg	IHC R	75 670 Kg	IMH	6 555 Kg
IRP 23 X	2300 Kg	IHC R	150 1185 Kg	IMH	8 600 Kg
IRP 29 X	2950 Kg	IHC R	250 1520 Kg	IMH	10 736 Kg
IRP 36 X	3600 Kg	IMG S**	400 380 Kg	IMH	15 1500 Kg
IRP 45 X	4500 Kg	IMG S**	600 570 Kg	IMH	19 1550 Kg
IMP*	15 1500 Kg	IMG S**	1200 1140 Kg	IMH	28 2095 Kg
IMP*	20 2080 Kg	IMG S**	1700 1610 Kg	IMH	3.5 SS 1150 Kg
IMP*	25 2400 Kg	IMG S**	2300 2180 Kg	IMH	SG16 845 Kg
IMP*	35 3500 Kg	IMG S**	2800 2650 Kg	IMH	SG20 845 Kg

*Crusher configuration - **Sorter configuration - ***Third-member configuration

Indeco Ind. SpA
viale Lindemann, 10 z.i. - 70132 Bari - Italy
tel. +39 080 531 33 70 - fax +39 080 537 79 76
info@indec.it - www.indec.it/en



The contents of this publication may not be reproduced in whole or in part without prior authorization from the Indeco Ind. SpA.

All rights reserved. Trademarks used in this catalog are the property of their respective holders.